

EXTENSION ARM



Application:

Leveraging loader capacities

Description:

The Hauer extension arm is made from thick-walled box section tube that has two holes out at 1,500mm and 2,000mm where you can install a hook for handling higher loads or extending the reach.

This can be increased even further to 3,000mm by a telescoping tube that is available as an option. The extension arm is designed to lift up to 1,000kg big bags at full reach.

Advantages:

- Thick-walled, sturdy box-section tube
- Easily extendable to 3,000mm by on optional telescoping tube
- Heavy-duty build for handling big bags at full reach

Standard specification:

- Standard SWE-B Hauer or SWE-Euro
- Standard Hauer orange or Hauer black matt

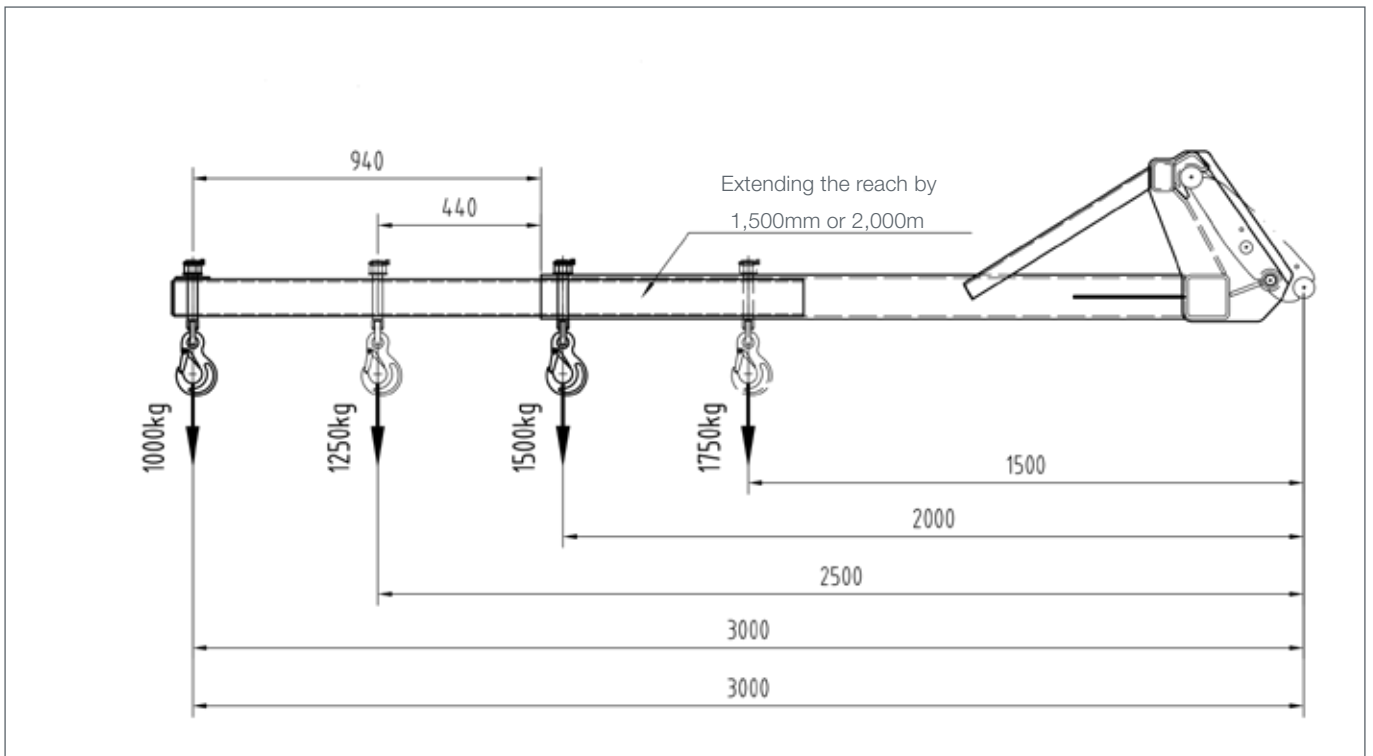
Options:

- Multiple mount options
- Paint finish available in all RAL colours



INNOVATION WITH TRADITION FOR LIFE.

Technical Data	Length mm	Width mm	Height mm	Weight kg
Extension arm for load hook	2060	1180	460	132
Extension tube	1700	100	100	32



Technical data and load diagram: Hook positions and maximum loads

