

MULTIGRAB MGS



Application:

The Hauer Multi Grab is a very versatile implement for front loaders and mid-range wheeled and farmyard loaders which typically use it in mucking, for handling brush clippings and similar materials. The solid design of the grab ensures no material is lost.

Description:

The Hauer Multi Grab has a curved bucket for easy removal of sticky materials. Offering a jaw opening of 1300 mm, the bucket provides great load capacity and efficiency. Its minimum operating weight allows users to take full advantage of the tractor payload. Available in sizes of 1400 mm to 2200 mm, it offers great flexibility for use in various applications. Also, the special design of the sides makes the attachment nearly a universal tool. The sides can be extended by bolted plates that are available as an option.

The welded cutting edge is made from hard-wearing 450 HB steel for maximum protection and longevity.

The extremely resistant 2K two-stage paint coat offers superb protection from corrosion and can be refinished in the course of a long service life.



INNOVATION WITH TRADITION FOR LIFE.

Advantages:

- Great longevity from high-quality materials
- Low operating weight for maximum load capacities
- Large 1300 mm jaw opening
- Versatile application (silage, manure, etc.)
- Sturdy down holder with 800 mm long, curved and threaded tines

Standard specification:

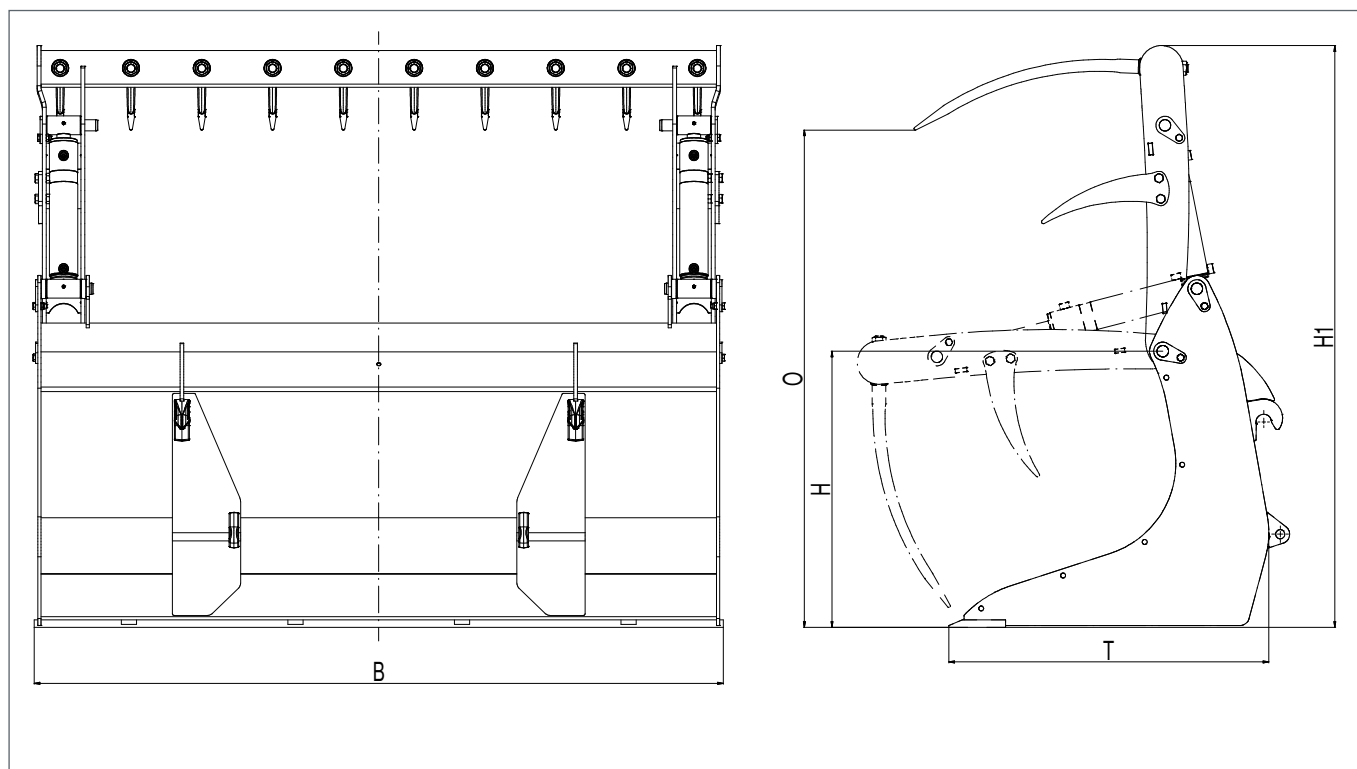
- SWE-B mount (Hauer system) or SWE-Euro mount (Euro Hook)
- Standard Hauer orange or Hauer matt black paint finish
- Down holder with a bolted tine on each side

Options:

- Multiple mount options
- Bolted side extensions (also as a retrofit option c/w bolts)
- Additional cutting edge
- Paint finish available in all RAL colours

Technical data:

| Width B mm | Volume m ³ | Tines | Closing force kN | Height H mm | Height H1 mm | Depth T mm | Max. jaw opening O mm | Weight kg |
|------------|-----------------------|-------|------------------|-------------|--------------|------------|-----------------------|-----------|
| 1400 | 0,80 | 8 | 17,5 | 805 | 1570 | 845 | 1300 | 299 |
| 1600 | 0,94 | 9 | | | | | | 330 |
| 1800 | 1,06 | 10 | | | | | | 362 |
| 2000 | 1,18 | 11 | | | | | | 393 |
| 2200 | 1,30 | 12 | | | | | | 425 |



© Hauer 09/2020. The illustrated products may differ from standard specification products. Subject to errors and changes.



Franz Hauer GmbH & CoKG, A-3125 Statzendorf, Werksstraße 6,

Tel.: +43 / (0)2786 / 7104-0, info@hfl.co.at | www.hfl.co.at