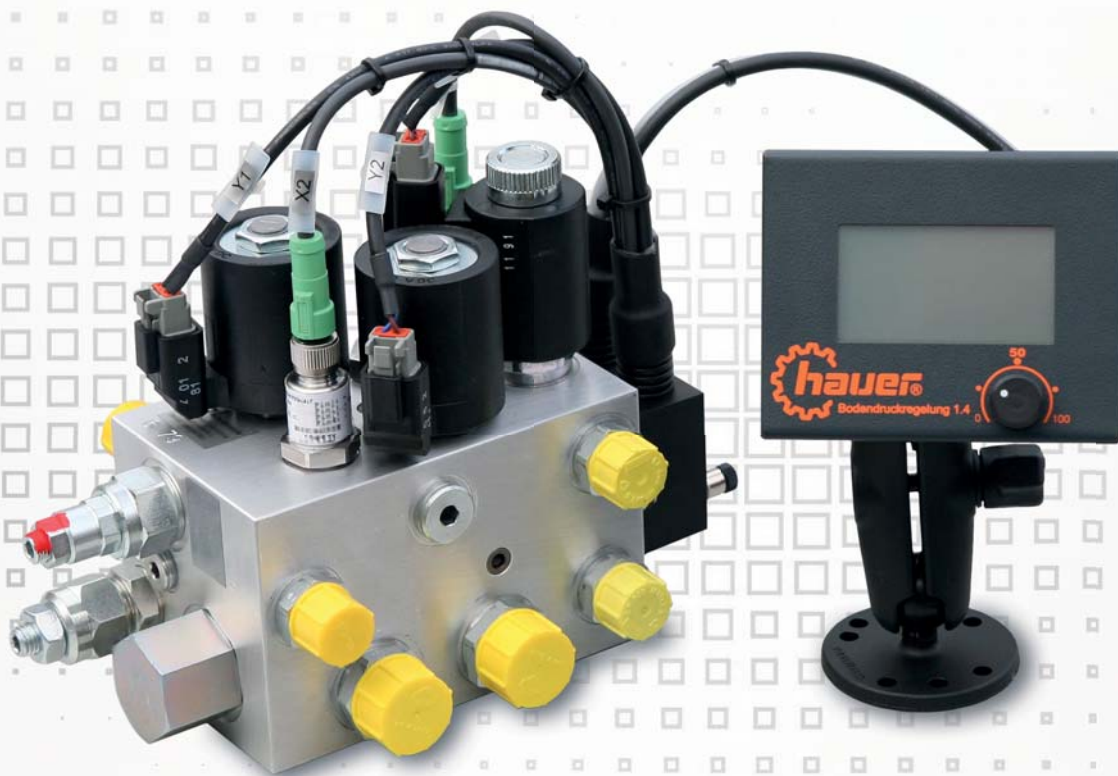


ELECTRO-HYDRAULIC FLOAT CONTROL

BDR-1.4

W
E
N



...technology, that moves



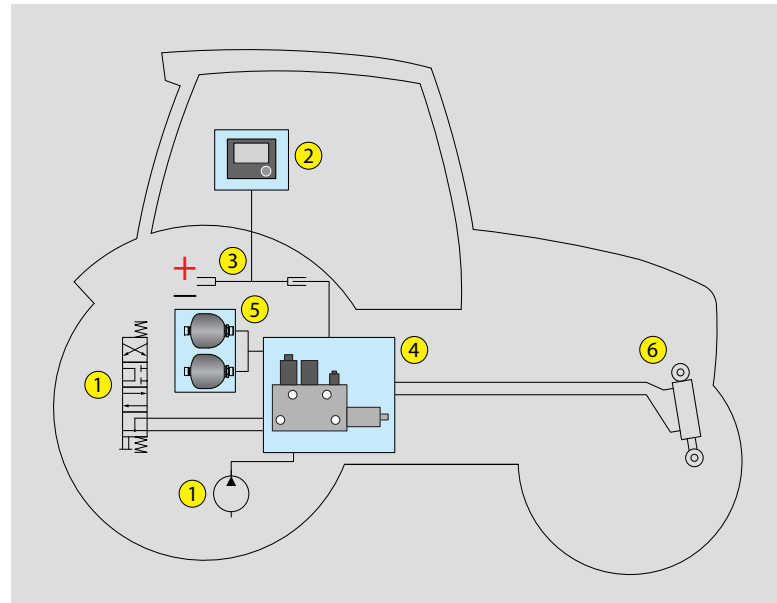
precise - user-friendly

The electro-hydraulic float control BDR-1.4 was especially developed by Hauer for hard conditions in agriculture and winter service.

The float control is based on the interaction of intelligently used electronics and hydraulics. This system helps reducing the ground pressure of front end implements and is mainly used together with mowers, mulchers and snow ploughs.

Generally, the hydraulic float control makes a significant contribution to an ideal ground pressure, greater efficiency and higher security.

With the BDR-1.4, the attached front mower or snow plough can be relieved of its weight at an adjustable proportion. This proportion is thereby transferred to the front axle on the carrier vehicle. This leads to an ideal protection of the ground, longer life times of wearing parts of the attached device, a higher traction and better tractability features of the carrier vehicle.



1. tractor hydraulics
2. control unit with touch screen
3. cable harness
4. valve block for electro-hydraulic float control
5. pressure accumulator
6. lifting cylinder



control unit with touch screen and potentiometer

technical data:

electro-hydraulic float control		BDR-1.4
pressure control up to	bar	5 - 220
max. operation pressure	bar	250
nominal flow	l	12
temperature range	°C	-20° bis 100°

Measurements and data can vary depending on equipment. Subject to technical changes.

The range for relieving weight can be adjusted continuously by a potentiometer from 5 to 220 bar. A digital display shows the set values. Five different values can be saved according to the individual requirements and different attachment devices. The attachment device has to be calibrated once and therewith the relieving value is saved in the control panel. These values can then be selected in the main menu.

The hydraulic float control BDR-1.4 can be easily refitted on existing Load-Sensing (LS) and Open Center (OC) systems - no additional sensors need to be installed or mounted.

the advantages at a glance:

- better traction of the carrier vehicle
- less wear on the scraping edge
- reduction of road damage
- reduction of working and driving resistance
- ideal terrain adaptation
- easy continuous operation by potentiometer
- less noise
- easy refitting
- flexibility by compact design
- easy operation by touch screen
- 5 storable device settings

Franz Hauer GmbH & CoKG

A-3125 Statzendorf, Werksstraße 6

Tel.: +43 / (0)2786 / 7104-0

Fax: +43 / (0)2786 / 7104-15

e-mail: info@hfl.co.at; Internet: www.hfl.co.at

